

D

**Montage-
anleitung**
**Tagfahrlicht/
Positionslicht**
Steuergerät

GB

**Mounting
instructions**
**Daytime running
light/Position
light Control unit**

F

**Instructions de
montage**
**Feu diurne/
Feu de position**
Calculateur

S

**Monterings-
anvisning**
**Varselljus/
Positionsljus**
Kontrollenhet

NL

**Montage-
handleiding**
**Dagrijlicht/
Positie licht**
Regeleenheid

E

**Instrucciones de
montaje**
**Luz diurna/Luz
de posición**
Unidad de control

I

**Instruzioni di mon-
taggio**
**Luce per di marcia
diurna/Luce di
posizione Centralina**

FIN

Asennusohje
Valojen
**Päiväajovalo/
Sivuvälo**
Ohjainlaite

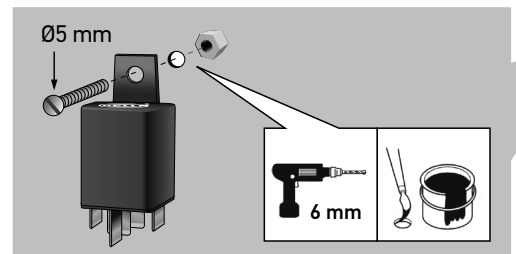
31 schwarz black noir svart

15 87a rot red rouge röd

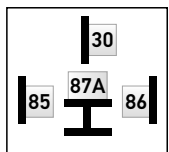
58 grau grey gris gra

Hella Bestellnr.
Hella Part. No.
Référence Hella
Hella best. nr.

12V: 8KA 959 186-901



Steckerbelegung
Pin configuration
Configuration des bornes
Anslutningar



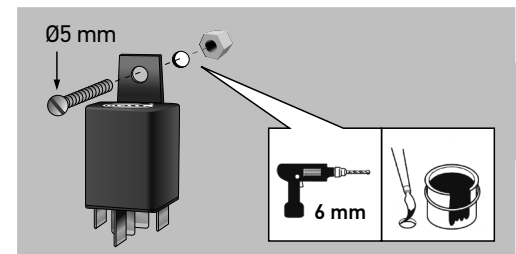
31 zwart negro nero musta

15 87a rood rojo rosso punainen

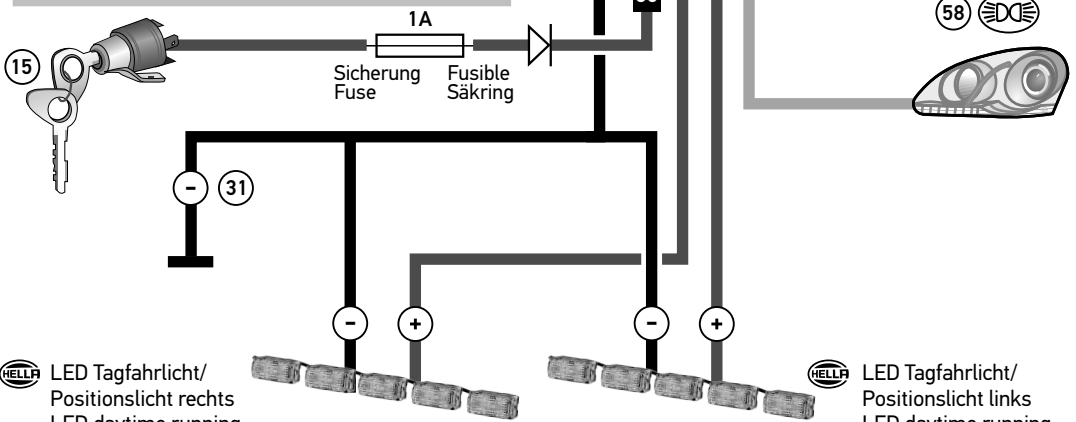
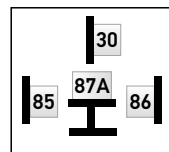
58 grijs gris grigio harmaa

Hella Betelnr.
Nº. De pedido Hella
No d'ordre Hella
Hella - nro

12V: 8KA 959 186-901

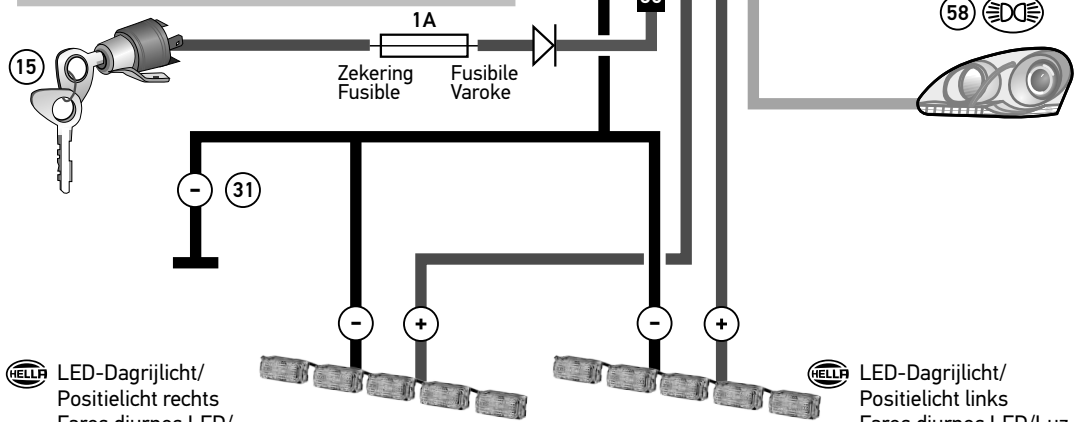


Stekkeropstelling
Disposición de clavijas
Disposizione attachi
Navoitus



LED Tagfahrlicht/
Positionslicht rechts
LED daytime running
light/Position light right
Feu diurne LED/feu de
position droit
LED-varselljus/
positionsljus höger

LED Tagfahrlicht/
Positionslicht links
LED daytime running
light/Position light left
Feu diurne LED/feu de
position gauche
LED-varselljus/
positionsljus vänster



LED-Dagrijlicht/
Positielicht rechts
Faros diurnos LED/
Luz de posición derecha
Luci di marcia diurna a
LED/Luce di posizione destra
LED-Päiväajovalo/
Sivuvälo oikea

LED-Dagrijlicht/
Positielicht links
Faros diurnos LED/Luz
de posición izquierda a
LED/Luce di posizione-
sinistra
LED-Päiväajovalo/
Sivuvälo vasen

