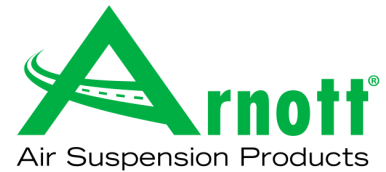


Installation Manual

AS-2603
ARNOTT REMANUFACTURED
REAR RIGHT AIR STRUT
2007-2013 MERCEDES-BENZ S-CLASS (W221)
2007-2014 MERCEDES-BENZ CL-CLASS (C216)
w/AIRM & ADS, w-w/o 4MATIC



Congratulations on your purchase of an Arnett® air suspension product. We at Arnett Incorporated are proud to offer a high quality product at the industry's most competitive pricing. Thank you for your confidence in us and our product.

Proper installation is essential to experience and appreciate the benefits of this system. Please take a moment to review these installation instructions before you begin to install these components on your vehicle. The removal and installation of air suspension products should only be performed by a fully qualified, ASE Certified, professional.

It is equally important to be aware of all necessary safety measures while installing your new Air Suspension System. This includes proper lifting and immobilizing of the vehicle and isolation of any stored energy to prevent personal injury or property damage.

"Engineered to Ride, Built to Last®"

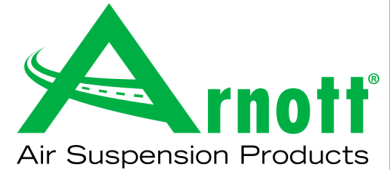


WARNING: *The air suspension system is under pressure (up to 10 bar, or 150 lbf/in). Verify pressure has been relieved and disconnect power to the air suspension system prior to disassembly. Do not allow dirt or grease to enter the system. Always wear standard hand, ear, and eye protection when servicing the air suspension system.*

Arnett® is committed to the quality of its products. If you have a question or problem with any Arnett product, please contact Arnett by calling [800-251-8993](tel:800-251-8993) during normal business hours or email techassistance@arnottinc.com.

Installation Manual

AS-2603
ARNOTT REMANUFACTURED
REAR RIGHT AIR STRUT
2007-2013 MERCEDES-BENZ S-CLASS (W221)
2007-2014 MERCEDES-BENZ CL-CLASS (C216)
w/AIRM & ADS, w-w/o 4MATIC



GENERAL INFORMATION:

Reading this manual signifies your agreement to the terms of the general release, waiver of liability, and hold harmless agreement, the full text of which is available at www.arnottinc.com.

- Not to be stored below 5°F (-15°C) or above 122°F (50°C).
- Avoid damage to air lines and cables.
- Removal and installation is only to be performed by fully qualified personnel.
- Use car manufacturer's diagnostic software.

CAUTION: Damage to the vehicle and air suspension system can be incurred if work is carried out in a manner other than specified in the instructions or in a different sequence.



To avoid the possibility of short circuits while working with electric components consult your owner's manual on how to disconnect your battery.



Consult your vehicle owner's manual, service manual, or car dealer for the correct jacking points on your vehicle and for additional care, safety and maintenance instructions. Under no circumstances should any work be completed underneath the vehicle if it is not adequately supported, as serious injuries and death can occur.

AIR STRUT REMOVAL

1. SET STEERING TO STRAIGHT AHEAD.
2. LIFT VEHICLE AND REMOVE REAR LEFT WHEEL. (FIGURE 1)



FIGURE 1

3. REMOVE THE BRAKE CALIPER CLIP. (FIGURE 2)



FIGURE 2

4. REMOVE THE TWO (2) BOLTS HOLDING THE BRAKE CALIPER. REMOVE THE BRAKE CALIPER AND SUSPEND TO PREVENT DAMAGE TO BRAKE LINES. (FIGURE 3, 4)

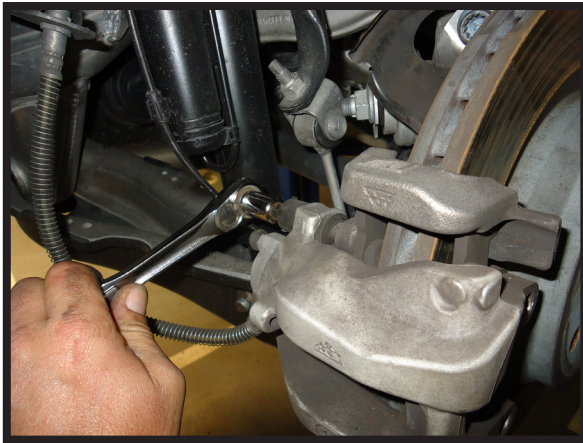


FIGURE 3



FIGURE 4

5. REMOVE THE FASTENERS AND INNERWHEEL LINER TO EXPOSE THE REAR AIR STRUT'S SWIRING BLOCK. (FIGURE 5, 6)



FIGURE 5

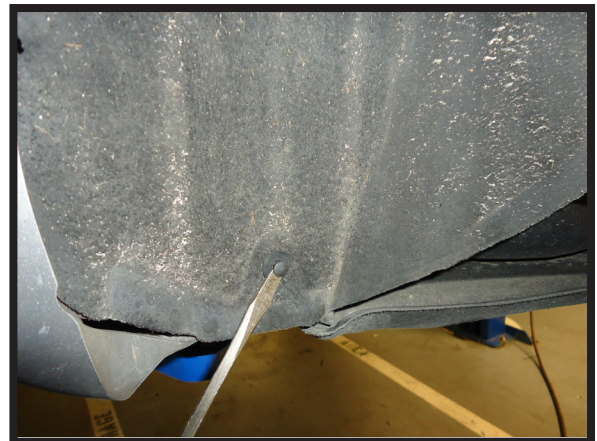


FIGURE 6

6. REMOVE THE METAL CLIP AND PLUG FOR THE REAR AIR STRUT'S DAMPENING COIL. (FIGURE 7, 8)



FIGURE 7



FIGURE 8

7. REMOVE THE LOWER SWAY BAR END LINK NUT AND SEPARATE. (FIGURE 9)

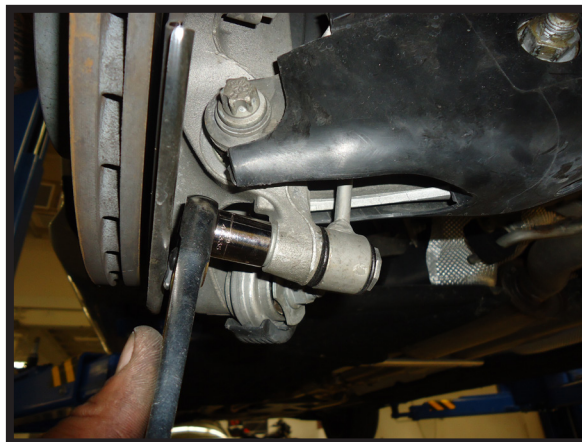


FIGURE 9

8. REMOVE THE LOWER AIR STRUT MOUNTING NUT. (FIGURE 10)

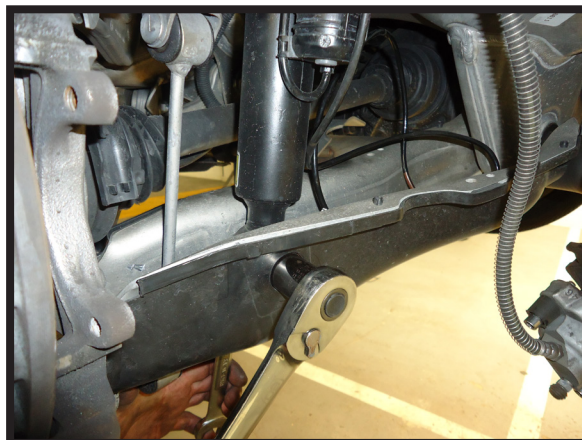


FIGURE 10

9. REMOVE THE LOWER CONTROL ARM NUT. (FIGURE 11)

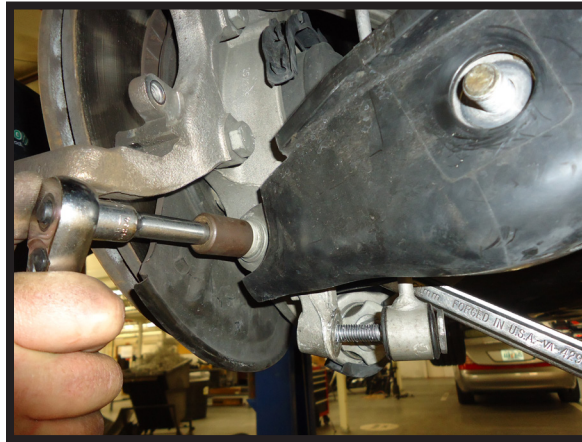


FIGURE 11

10. REMOVE THE REAR DASH COVER FROM INSIDE OF THE VEHICLE. (FIGURE 12)



FIGURE 12

11. PULL BACK THE FOAM INSULATION TO EXPOSE THE AIR STRUT TOP MOUNT. (FIGURE 13)



FIGURE 13

12. REMOVE THE AIR LINE. (FIGURE 14, 15)



FIGURE 14



FIGURE 15

13. REMOVE THE THREE (3) TOP MOUNTING NUTS. (FIGURE 16)

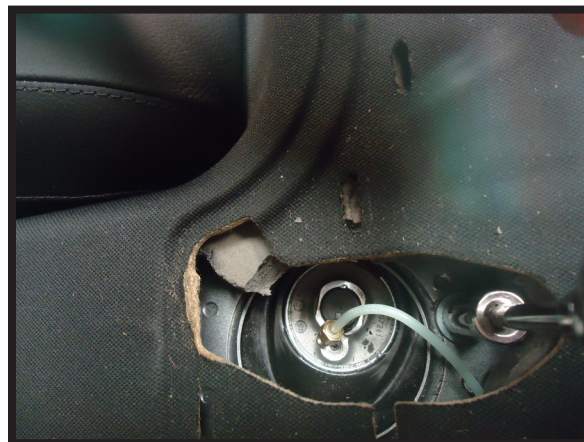


FIGURE 16

14. REMOVE THE LOWER CONTROL ARM BOLT AND THE LOWER AIR STRUT MOUNTING BOLT. (FIGURE 17)



FIGURE 17

15. PULL DOWN ON THE LOWER CONTROL ARM AND REMOVE THE AIR STRUT FROM THE VEHICLE.
(FIGURE 18)



FIGURE 18

16. REMOVAL COMPLETE.

AIR STRUT INSTALLATION



Tighten all nuts and bolts to manufacturer's specifications during the installation process.

1. INSTALLATION IS IN THE REVERSE ORDER OF AIR STRUT REMOVAL.